

202  
10.1  
10.2 HW

p526 16-20 32-37, 52-54

16.  $\odot F$  17.  $\overline{FA}$ ,  $\overline{FB}$ , or  $\overline{FE}$  18.  $\overline{CD}$  or  $\overline{BE}$

19.  $\overline{BE}$  20.  $\overline{AF}$

32.  $AE = 2$

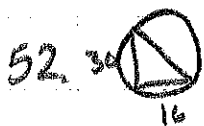
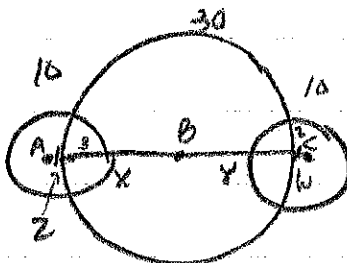
33.  $ZX = 3$  5-2

34.  $BX = 12$  15-3

35.  $BY = 12$

36.  $YW = 3$  5-2

37.  $AC = 34$   $30 + 2 + 2$



$$d^2 = 16^2 + 30^2$$

$$d = 34$$

$$C = 34\pi \text{ m}$$

53,



$$d^2 = 3^2 + 4^2$$

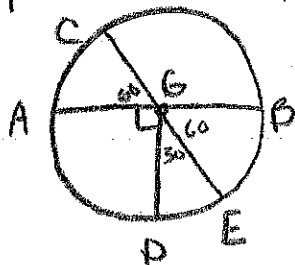
$$d = 5$$

$$C = 5\pi \text{ ft}$$

$$54. d = 10\sqrt{2}$$

$$C = 10\pi\sqrt{2} \text{ in}$$

p533 14-23, 32-42



$$14. m\angle CGB = 120$$

$$15. m\angle BGE = 60 \text{ vert.}$$

$$16. m\angle AGD = 90$$

$$17. m\angle DGE = 30$$

$$18. m\angle CGD = 150 \begin{matrix} 90 \\ + 60 \end{matrix}$$

$$19. m\angle AGE = 120$$

$$90 + 30$$

$$4x + 15 = 2x + 65$$

$$2x = 50$$

$$x = 25$$

$$4(25) + 15 = 115$$

$$20. m\angle ZXV = 115^\circ$$

$$21. m\angle YXW = 115^\circ$$

$$22. m\angle ZXY = 65^\circ$$

$$23. m\angle VXW = 65^\circ$$

$$4x + 2x + 24 = 180$$

$$6x = 156$$

$$x = 26$$

$$4 \cdot 26 = 104$$

$$32. m\widehat{UV} = 76 \begin{matrix} 180 \\ - 104 \end{matrix}$$

$$33. m\widehat{WV} = 76 \text{ vert.}$$

$$34. m\widehat{WX} = 52 \begin{matrix} 104 \\ - 52 \end{matrix}$$

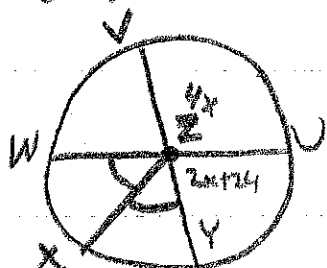
$$36 - 52 \rightarrow 38. m\widehat{VY} = 308$$

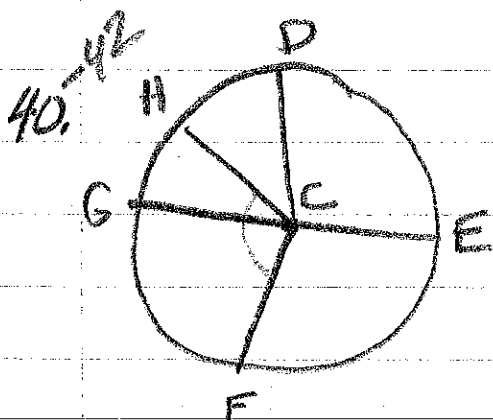
$$35. m\widehat{XP} = 52$$

$$36. m\widehat{WY} = 256 \begin{matrix} 180 \\ - 76 \end{matrix}$$

$$37. m\widehat{VW} = 256$$

$$39. 308 = m\widehat{WX}$$





$$d = 32$$

41.  $m\angle DCE = 90$

$$\frac{270}{360} \cdot 32\pi$$

$$\widehat{DHE} = \frac{3}{4} \cdot 32\pi = 24\pi \text{ units}$$

40.  $m\angle DCE = 100$

$$\frac{100}{360} \cdot 32\pi$$

$$\widehat{DE} = \frac{80\pi}{9} \approx 27.9 \text{ units}$$

42.  $m\angle HCF = 125$

$$\frac{235}{360} \cdot 32\pi$$

$$\widehat{HDF} = \frac{188\pi}{9}$$